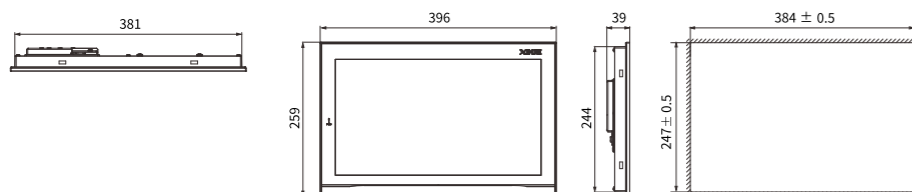


Specification parameters

Item	TS5D-1500-E2	TS5D-1500-4G	TS5D-1500-W	
Product feature	Size	15.6"		
	Type	16.77 million colors		
	Resolution	1920*1080		
	Brightness	250 cd/m ²		
	Touch panel	Four-wire resistive touch panel		
	Service life	Over 30000 hours, ambient temperature of 25°C, 24-hour operation		
	Processor	Cortex-A7 1.2GHz		
	Storage	256MB		
Interface	Adaptive software	TouchwinPro software		
	COM1	RS232/RS485		
	COM2	RS232/RS485/RS422		
	Ethernet port	Standard RJ45, 10/100M*2		
	USB port1	USB-A (compliant with USB2.0 specifications), 2 USB flash drive ports		
	USB port2	Type-C, USB download port		
	Audio	Ø3.5coaxial audio interface		
	4G	/	4G LTE-FDD (Mbps): 10 (downlink) / 5 (uplink)	/
	WiFi	/	/	IEEE 802.11 a/b/g/n IEEE 802.11 g:54Mbps
	Electrical feature	Input voltage	DC24V (voltage range: DC22V-DC26V)	
Power		10W		
Allowable instant power failure		Below 10ms (actual power loss less than 1s)		
Withstand voltage		AC1000V, 10mA, less than 1 minute (signal to ground)		
Insulation impedance		DC500V, above 10MΩ (signal to ground)		
Environment	Operation temperature	0-50°C		
	Storage temperature	-10-60°C		
	Environmental humidity	10%RH-90%RH (without condensation)		
	Vibration resistance	10-25Hz (2G in X, Y, and Z directions for 30 minutes each)		
	Anti-interference	Voltage noise: 1500Vp-p, pulse width 1us, 1 minute		
	Surrounding air	Non corrosive gas		
Structure	Protection level	Front panel Ip65		
	Cooling method	Natural air cooling		
	External dimension (mm)	396.0*259.0*39.0		
	Opening size (mm)	384.0*247.0 (±0.5)		

Product dimension diagram (Unit: mm)

TS5D-1500series



XINJE WeChat

WUXI XINJE ELECTRIC CO.,LTD.

Address: No.816 Jianzhu West Road, Binhu District, Wuxi City, Jiangsu Province, China

TEL: 0510-85134136

Fax: 0510-85111290

Website: www.xinje.com

E-mail: xinje@xinje.com

Technical Service Hotline
400-885-0136



TS5D series IoT metal HMI

Fearless of harsh environment and remote information exchange

Automation trusted partners

TS5D series

IoT Metal HMI

The TS5D series IoT HMI cleverly integrates the HMI with gateway products, through built-in 4G or WiFi communication modules, it not only has traditional HMI functions but also enables 4G or WiFi networking functions. The metal structure of the entire machine greatly enhances its heat dissipation and anti-interference capabilities, making it suitable for use in harsh on-site environments.

Higher performance,
suitable for harsh scenarios



Appearance

Ultra thin body

The thickness is only 39mm, saving installation space



Metal cover

Metal structure enhances overall anti-interference and heat dissipation

Performance

Higher performance

ARM Cortex-A7 processor, main frequency 1.2GHz



Larger capacity

256MB memory, large capacity storage

Function

Networking communication

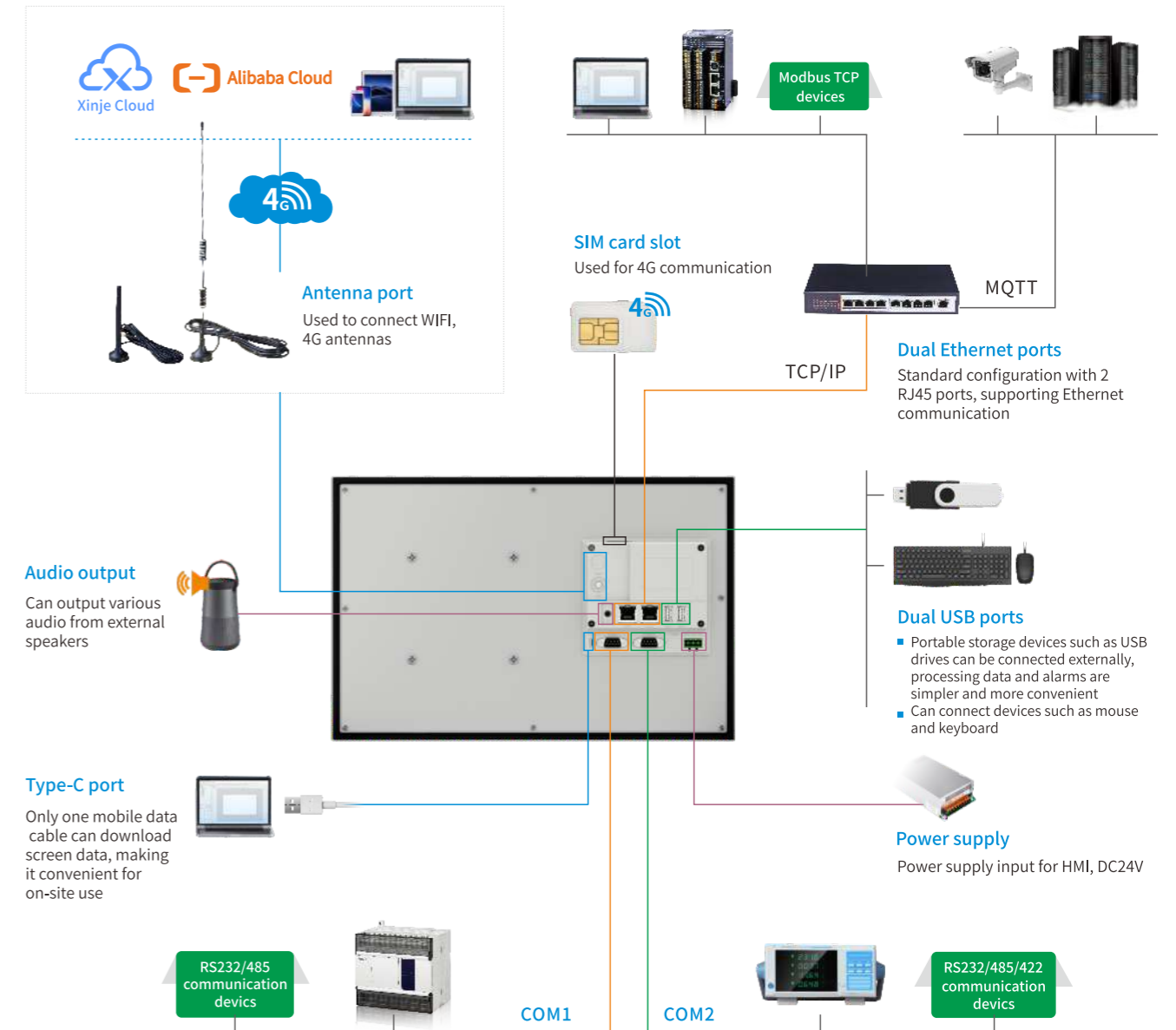
- Support wired communication, optional wireless (WiFi or 4G) internet access, ensuring both communication and networking
- Cover mainstream information exchange protocols, support MQTT and TCP/IP communication

Multimedia

Support streaming media and preset video playback, with better performance when used in conjunction with audio

Real time monitoring

Support connecting network cameras for remote monitoring



Naming rule

TS5D - 1500 - E2

① ② ③

- ① Series name: TS5D series
- ② Display size: 1500: 15.6 inches

③ Interface configuration

- E2:** Equipped with Type-C port, USB-A port*2, COM1, COM2, RJ45 port*2, audio port
- 4G:** Equipped with Type-C port, USB-A port*2, COM1, COM2, RJ45 port*2, audio port, SIM card slot, antenna port
- W:** Equipped with Type-C port, USB-A port*2, COM1, COM2, RJ45 port*2, audio port, antenna port