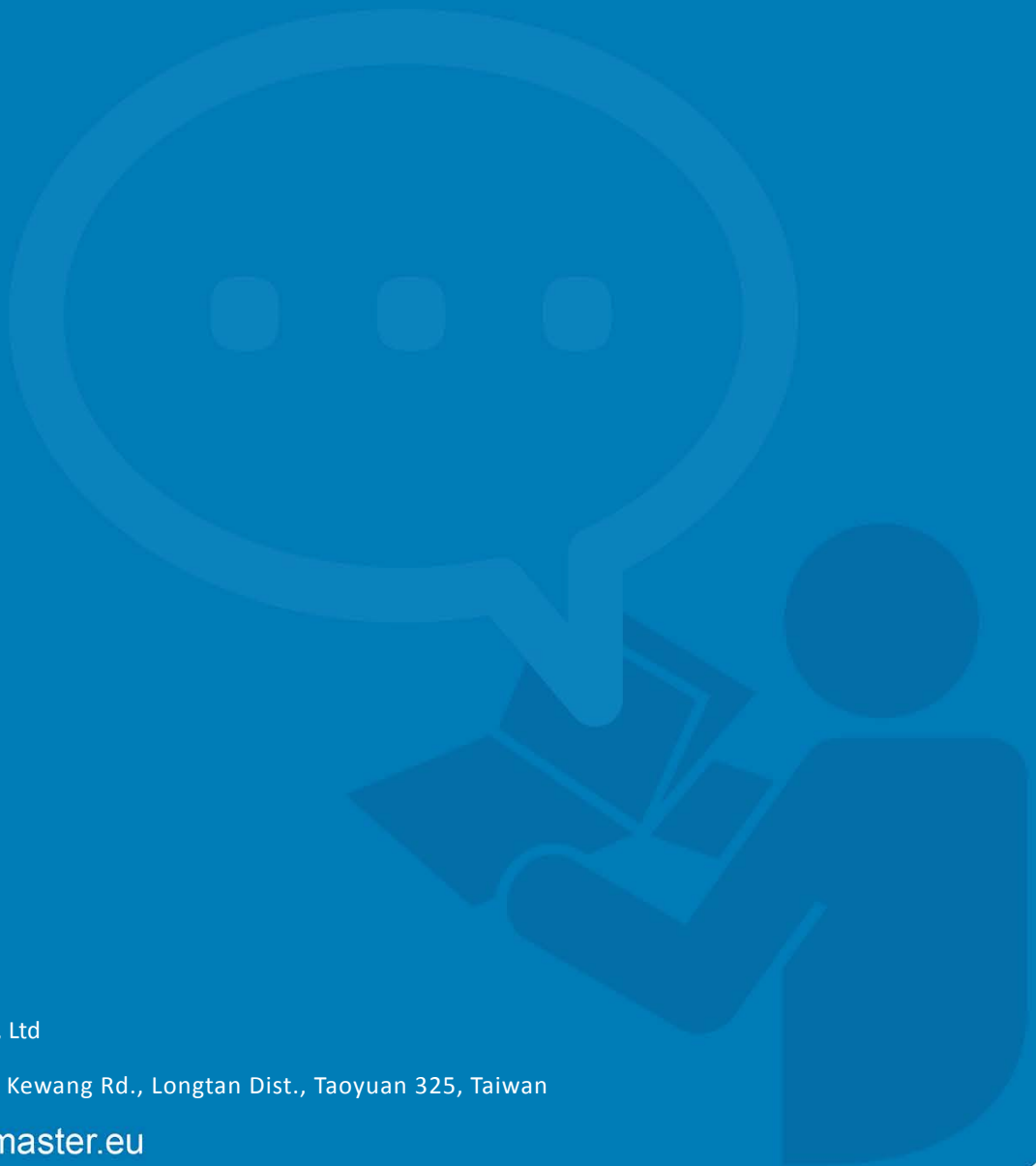


Quick Installation Guide

ViewMaster

August 20, 2018 V1.0



WOM ASIA Co., Ltd

1F., No.185-3, Kewang Rd., Longtan Dist., Taoyuan 325, Taiwan

www.womaster.eu

WoMaster

ViewMaster

Installation Guide

Copyright Notice

© WoMaster. All rights reserved.

About This Manual

This user manual is intended to guide a professional installer to install and to configure the ViewMaster. It includes procedures to assist you in avoiding unforeseen problems.



NOTE:

Only qualified and trained personnel should be involved with installation, inspection, and repairs of this router.

Disclaimer

WoMaster reserves the right to make changes to this Installation Guide at any time without notice. Information provided here is intended to be accurate and reliable. However, it might not cover all details and variations in the equipment and does not claim to provide for every possible contingency met in the process of installation or operation. Should further information be required or should particular problem arise which are not covered sufficiently for the user's purposes, the matter should be referred to WoMaster. Users must be aware that updates and amendments will be made from time to time to add new information and/or correct possible unintentional technical or typographical mistakes. It is the user's responsibility to determine whether there have been any such updates or amendments of the Installation Guide.

WoMaster Online Technical Services

At WoMaster, you can use the online service forms to request the support. The submitted forms are stored in server for WoMaster team member to assign tasks and monitor the status of your service. Please feel free to write to help@womaster.eu if you encounter any problems.

TABLE OF CONTENTS

COVER.....	1
TABLE OF CONTENTS	3
OVERVIEW	4
SYSTEM REQUIREMENTS.....	4
INSTALLING VIEWMASTER ON WINDOWS.....	5
VIEWMASTER FEATURES	10

OVERVIEW

The firmware upgrade of each device is tedious and time-consuming. It also costs a lot of time of network administrators. In addition, when there are multiple devices in the network, it is very difficult for network administrators to correctly remember the IP addresses of each device, resulting in device management and network monitoring issues.

ViewMaster is an Industrial Network Configuration Utility that provides with a batch configuration that allows user to perform firmware upgrades and import/export of configuration files for multiple devices at the same time. The Fast Update of Basic Settings feature allows user to quickly reboot devices and change IP settings. Even if user does not know the IP address of the device, user can use the ViewMaster configuration tool to search and find and manage and monitor the network device.

SYSTEM REQUIREMENTS

- CPU: Intel Core i5
- RAM: 8GB
- HD space: 1GB
- OS: Windows 7 or Windows 10
- LAN: 100MB or 1000MB Ethernet LAN card

Supported Device Lists (Please pay attention the Firmware version)

Device	Firmware
SCB Series	V1.0
DS306	V1.0
WR Series	V1.0
DP310/DS310	V1.0
DS612/DS612	V1.0
DP412/DS412	V1.0
MP310	V1.0
MP614	V1.0
DS409	V1.0

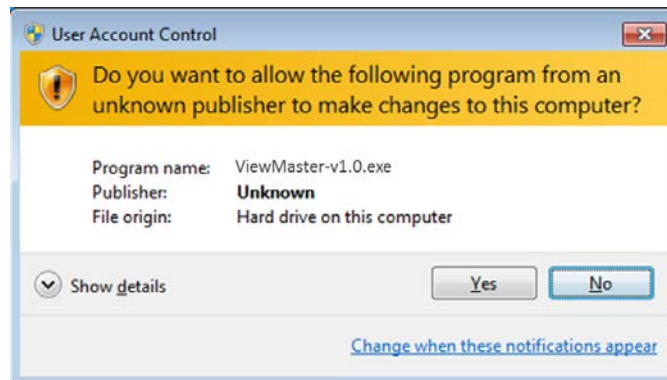
KNOWN RESTRICTIONS OR LIMITATION

1. LED signal function does not support DS306, SCB series, WR series.
2. DHCP Client Enable function does not support DS306, SCB series, WR series.
3. Bootloader upgrade function does not support DS306, SCB series, WR series.

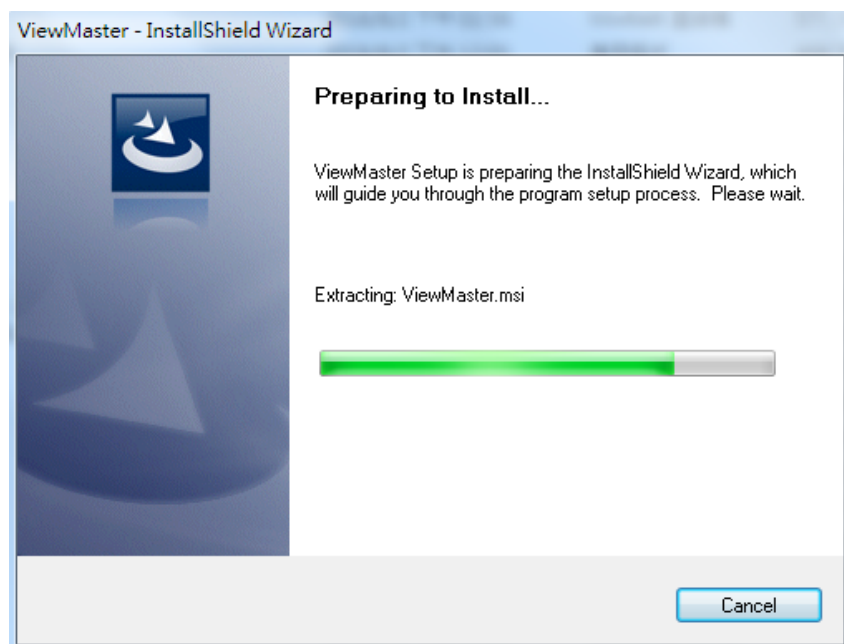
INSTALLING VIEWMASTER ON WINDOWS

STEP 1: Download the ViewMaster installation file to your computer. Extract the file and to run the setup program by double clicking the setup.exe icon. (<https://www.womaster.eu/download.php>)

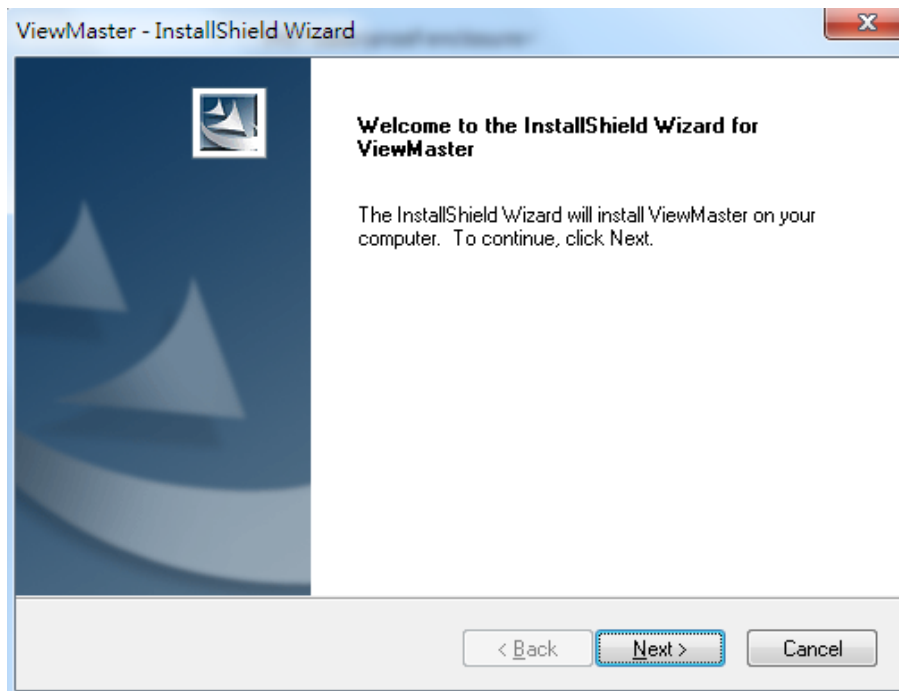
STEP 2: Click the installer file, and a warning message from Windows about User Account Control will appear then click **Yes**.



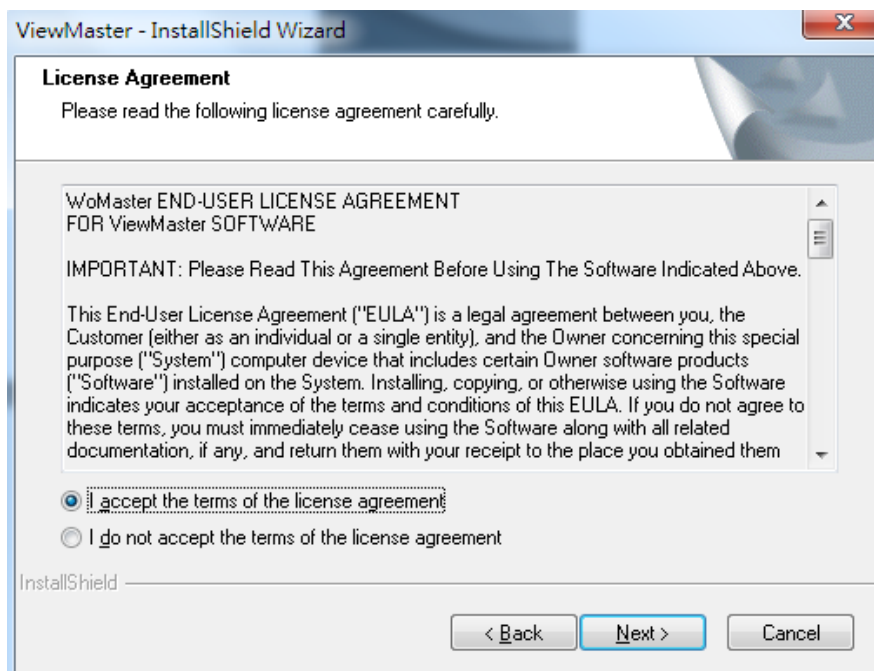
STEP 3: A preparing to install form will appear and wait till extracting the ViewMaster.msi file is complete.



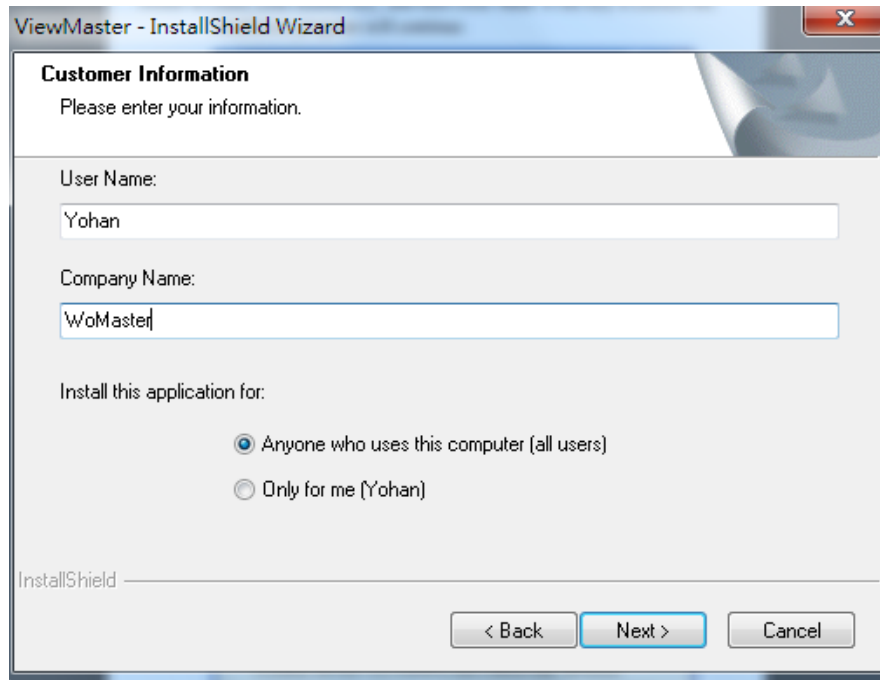
STEP 4: Click **Next** to install ViewMaster.



STEP 5: Read the License Agreement carefully, and then click I accept the terms of the license agreement. Click Next to continue.

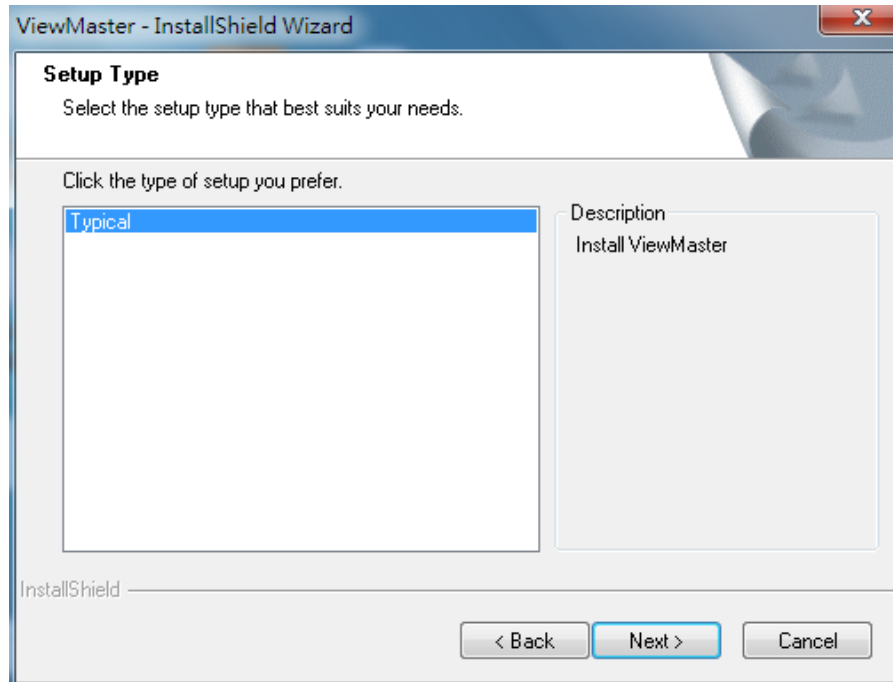


STEP 6: Fill the Customer Information form User Name and Company Name, and also choose for who user install the application for. After that click Next to continue.



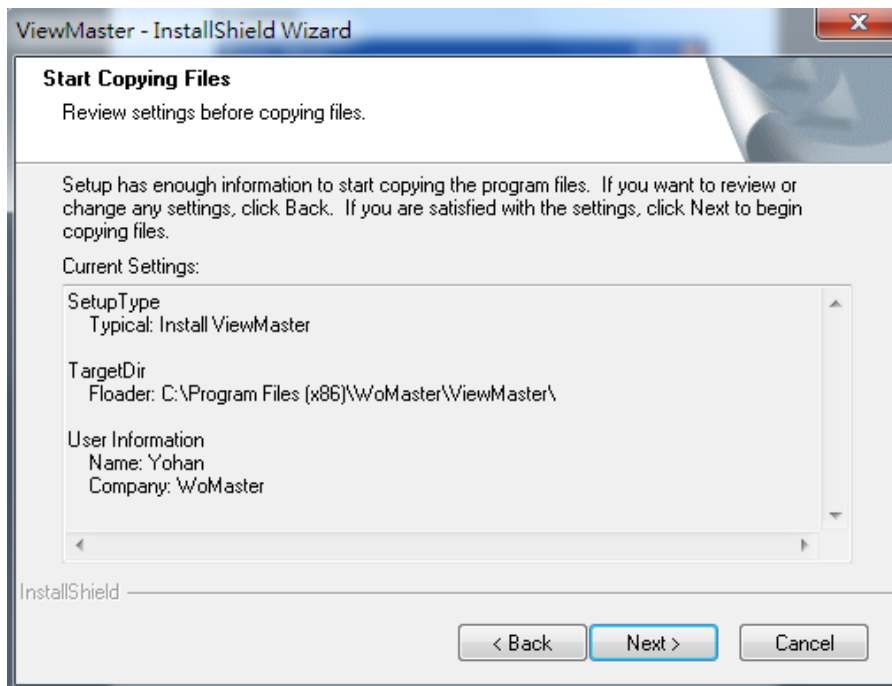
The screenshot shows the 'ViewMaster - InstallShield Wizard' window. The title bar includes the text 'ViewMaster - InstallShield Wizard' and a close button. The main content area is titled 'Customer Information' and contains the instruction 'Please enter your information.' Below this, there are two text input fields: 'User Name:' with the value 'Yohan' and 'Company Name:' with the value 'WoMaster'. Underneath, the text 'Install this application for:' is followed by two radio button options: 'Anyone who uses this computer (all users)' (which is selected) and 'Only for me (Yohan)'. At the bottom left, the 'InstallShield' logo is visible. At the bottom right, there are three buttons: '< Back', 'Next >', and 'Cancel'.

STEP 7: Select the type of setup, then click Next to continue.

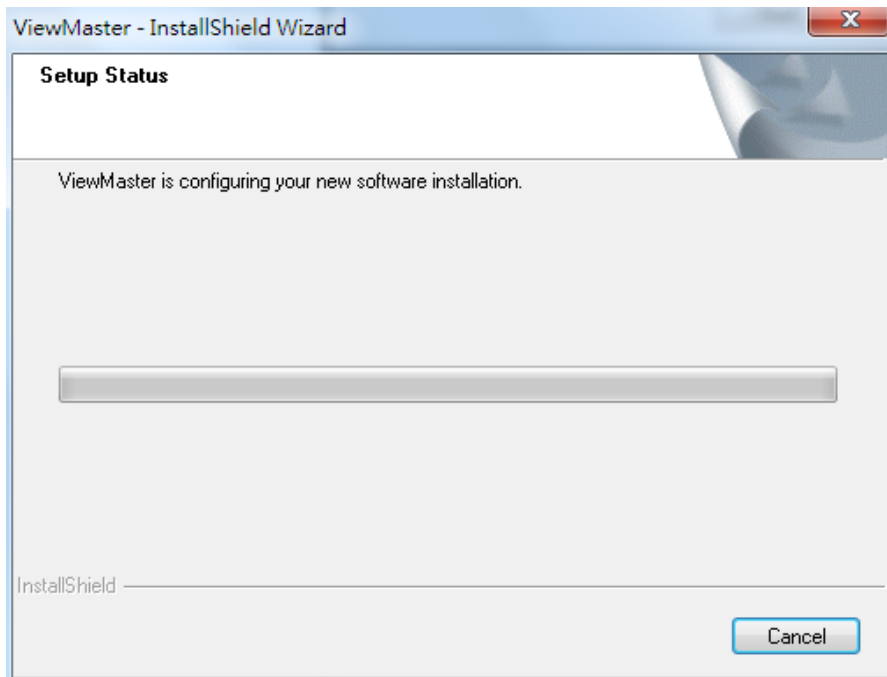


The screenshot shows the 'ViewMaster - InstallShield Wizard' window. The title bar includes the text 'ViewMaster - InstallShield Wizard' and a close button. The main content area is titled 'Setup Type' and contains the instruction 'Select the setup type that best suits your needs.' Below this, the text 'Click the type of setup you prefer.' is followed by a list box containing the item 'Typical', which is highlighted. To the right of the list box is a 'Description' field containing the text 'Install ViewMaster'. At the bottom left, the 'InstallShield' logo is visible. At the bottom right, there are three buttons: '< Back', 'Next >', and 'Cancel'.

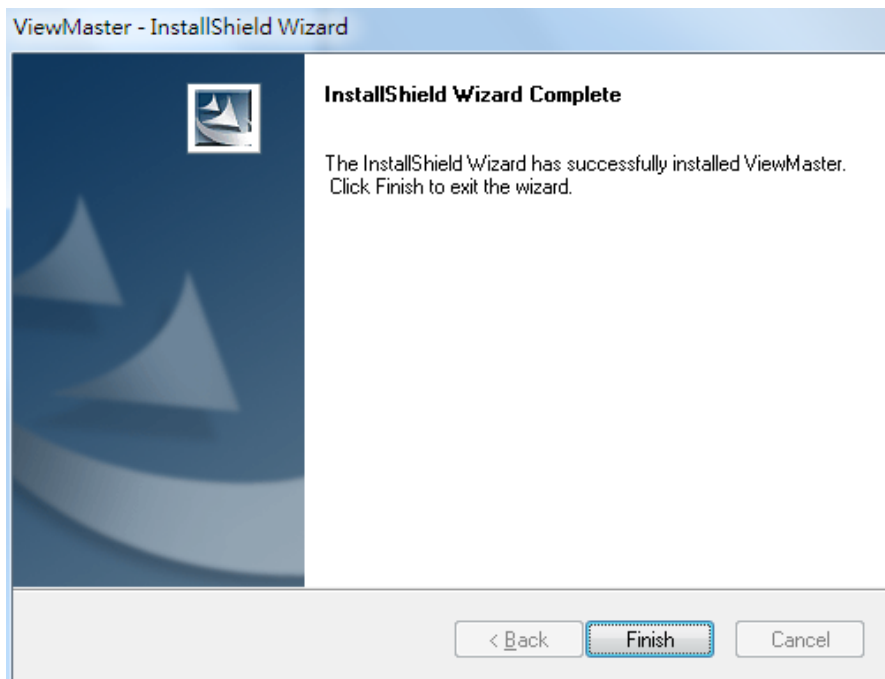
STEP 8: Verify that all of the information are correct, and then click Next to continue.



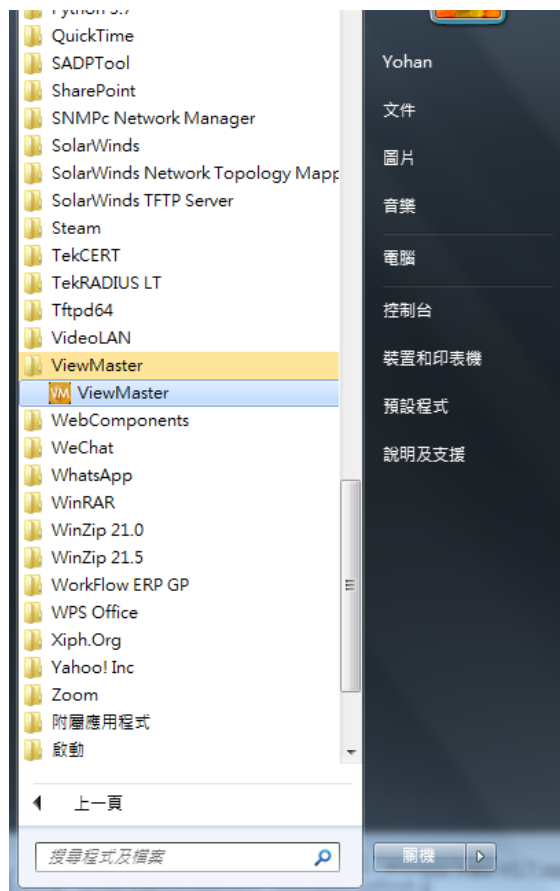
STEP 9: Wait while the program is installed.



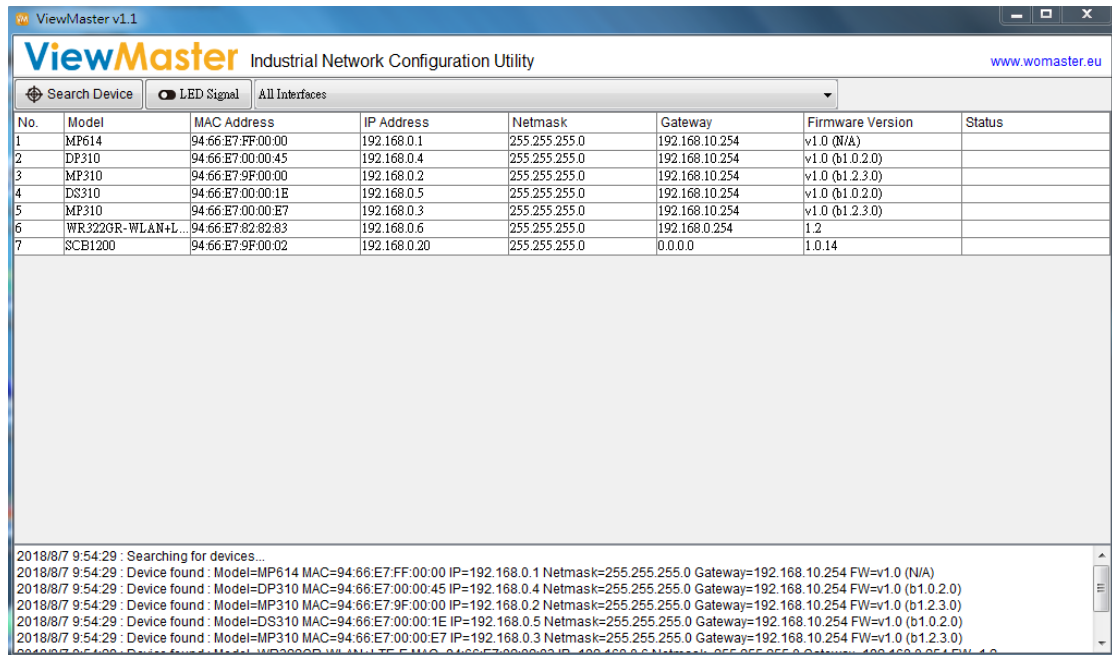
STEP 10: Click **Finish** to complete the installation.



STEP 11: To open the user interface of the ViewMaster, click Start > Programs > ViewMaster > ViewMaster.exe

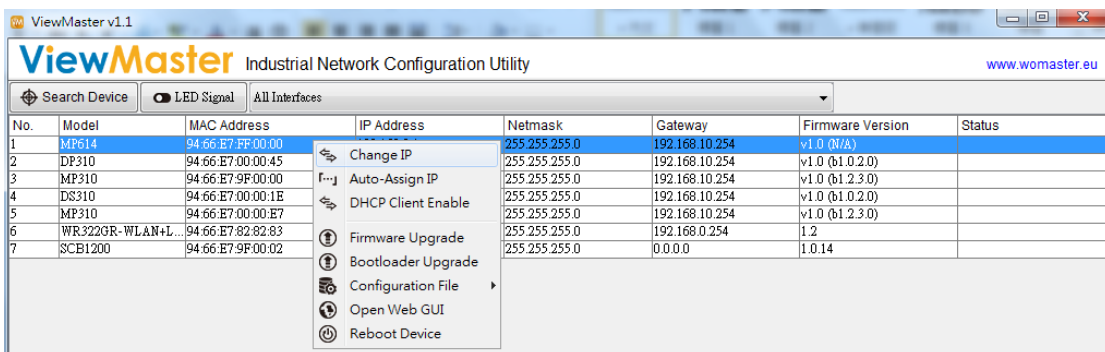


After that the ViewMaster interface will appear. When the software is ready, user may click the Search Device then the list will show up some devices that detected by the interface.

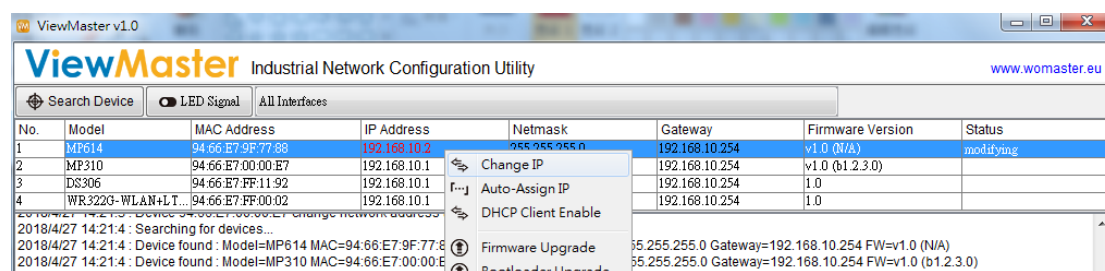


VIEWMASTER FEATURES

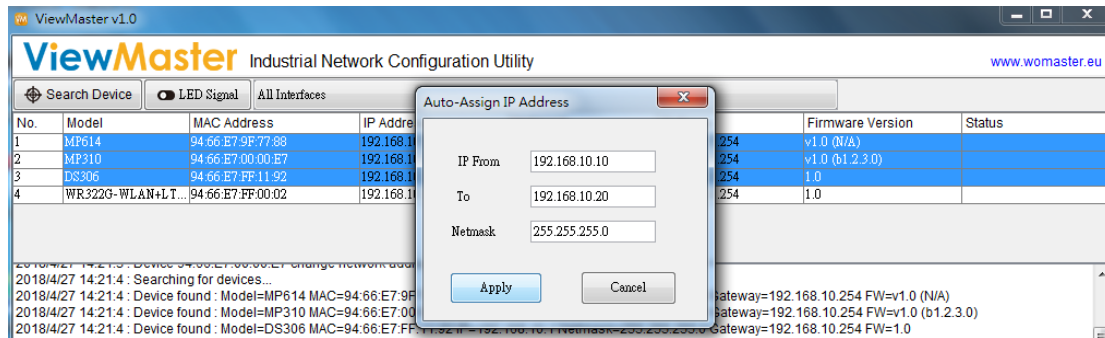
1. **Search Device** – Click this button to get the list of the device that available on the network.
2. **LED Signal** – Check the specific device, when user select the device from the list then click the LED signal the system LED from the device will blinking.
3. **All Interfaces** – ViewMaster can get the list based on the interface, user may change the interface.
4. **Right Click on the list.**



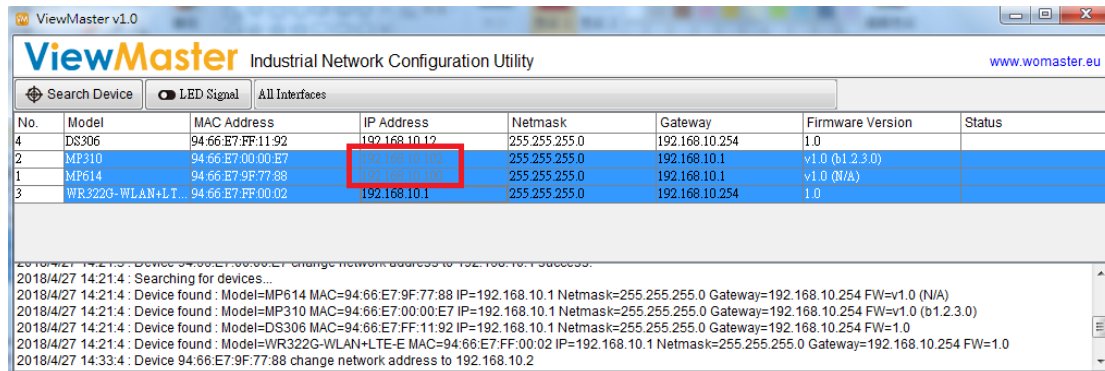
a. **Change IP** – User just needs to change the IP directly from the list on the IP Address Column.



b. **Auto-Assign IP** –User may need to put the IP range that wants to be assigned to the device. And then the IP Address from the device will follow the IP Range that user assigned. User may change the IP Address from one device or a group of device in this mechanism.



c. **DHCP Client Enable** – DHCP Client Enable mechanism is a mechanism where user needs to assign the IP Address that receives from the DHCP Server. To apply this mechanism, make sure there is a DHCP server on the network.



Note: DHCP Client Enable function do not support DS306, SCB series, WR series

For IP Assignment Mechanism, the most important thing that need to be pay attention is don't forget to put the Gateway if you want to change the IP for all of the mechanisms, because it should be in the same subnet.

- d. **Firmware Upgrade** – User may upgrade the firmware one by one or for a group of devices.
- e. **Bootloader Upgrade** – User may upgrade the bootloader.
- f. **Configuration File** – for this configuration file, user may do the backup the configuration, restore the configuration and load the factory default configuration.
- g. **Open Web GUI** – User may open the web GUI directly
- h. **Reboot Device** – User may reboot the device one by one or by group of devices.