

Quick Installation Guide

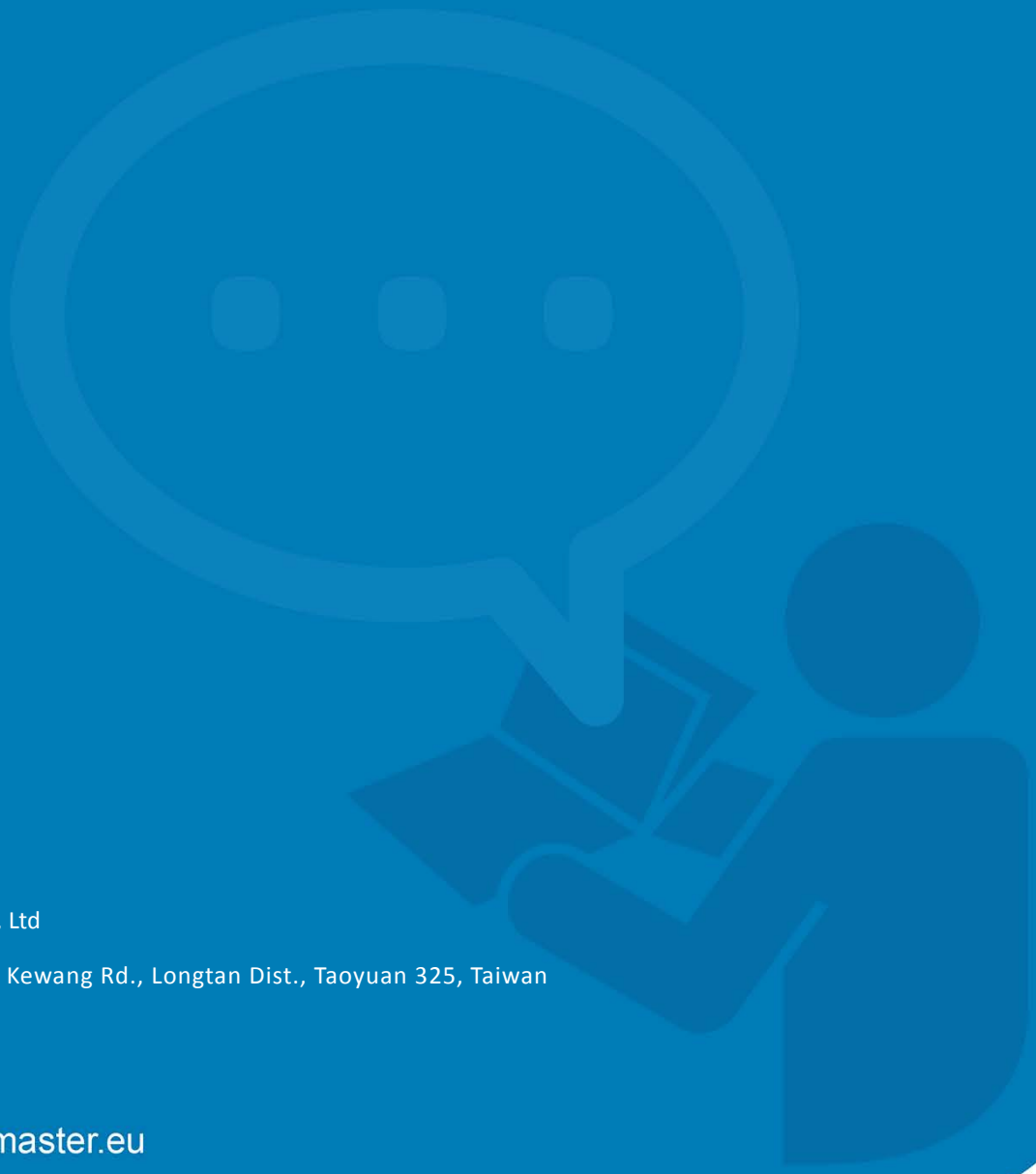
NetMaster

August 20, 2018 V1.0

WOM ASIA Co., Ltd

1F., No.185-3, Kewang Rd., Longtan Dist., Taoyuan 325, Taiwan

www.womaster.eu



WoMaster

NetMaster

Installation Guide

Copyright Notice

© WoMaster. All rights reserved.

About This QIG

This QIG is intended to guide a professional installer to install and to configure the NetMaster. It includes procedures to assist you in avoiding unforeseen problems.



NOTE:

Only qualified and trained personnel should be involved with installation, inspection, and repairs of this router.

Disclaimer

WoMaster reserves the right to make changes to this Installation Guide at any time without notice. Information provided here is intended to be accurate and reliable. However, it might not cover all details and variations in the equipment and does not claim to provide for every possible contingency met in the process of installation or operation. Should further information be required or should particular problem arise which are not covered sufficiently for the user's purposes, the matter should be referred to WoMaster. Users must be aware that updates and amendments will be made from time to time to add new information and/or correct possible unintentional technical or typographical mistakes. It is the user's responsibility to determine whether there have been any such updates or amendments of the Installation Guide.

WoMaster Online Technical Services

At WoMaster, you can use the online service forms to request the support. The submitted forms are stored in server for WoMaster team member to assign tasks and monitor the status of your service. Please feel free to write to help@womaster.eu if you encounter any problems.

TABLE OF CONTENTS

COVER.....	1
TABLE OF CONTENTS	3
OVERVIEW	4
SYSTEM REQUIREMENTS	4
INSTALLING NETMASTER ON WINDOWS.....	5
NETMASTER SERVER & CLIENT	10

OVERVIEW

The NetMaster Industrial Network Management System software is designed for network device discovery, configuration, auto topology, real time monitor, and diagnostic. It secures network devices, physical links and resilient network in mission critical industrial networks. The NetMaster manages device configurations, firmware versions and upgrades, fault alert and event logs. A server client operation is designed to ensure network reliability in large scale network up to 2000 nodes including wireless and 3rd party compliant devices. It can be freely download for 20 nodes trial.

SYSTEM REQUIREMENTS

- CPU: Intel Core i5
- RAM: 8GB
- HD space: 1GB
- OS: Windows 7 or Windows 10
- LAN: 100MB or 1000MB Ethernet LAN card

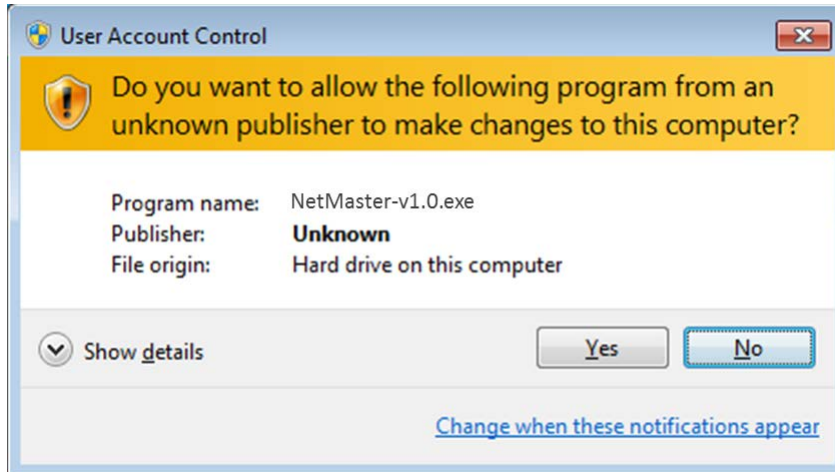
KNOWN RESTRICTIONS OR LIMITATION

1. The ERPS main screen indicates that the "dotted line" of the detected connection between the DUTs is incorrect.
2. Open NetMaster then insert LAN port, the LAN interface hasn't updated.
3. When Firmware writing, the status will show error display.
4. Event log show error display when user changes the language.
5. Can't do multi-device refresh, ping & telnet if don't login edit mode.
6. More than 500 sets, can't sweep all machines at once.
7. There is no way to change/add MIB value if the type is table view.

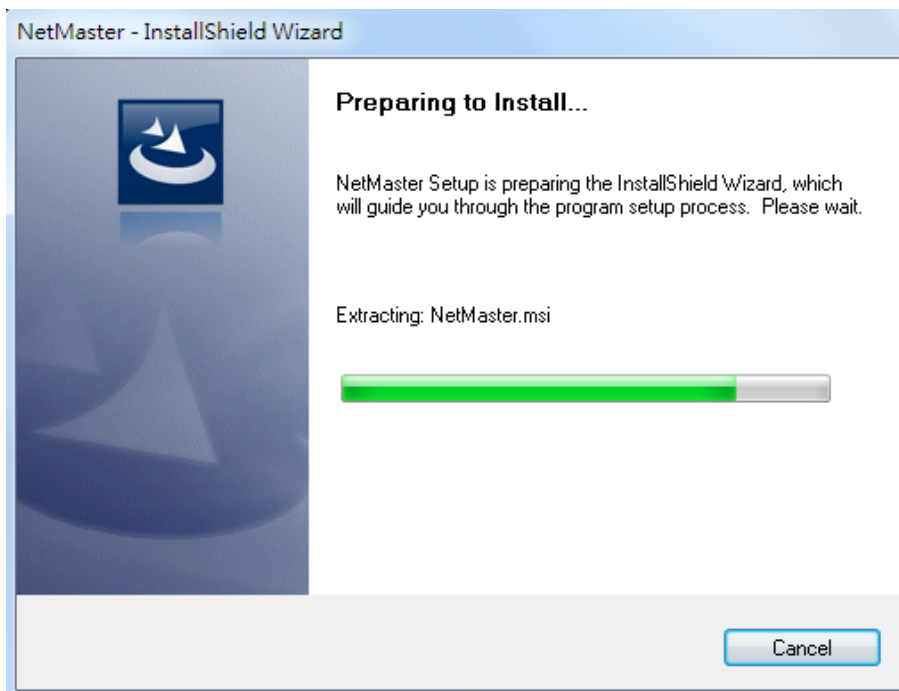
INSTALLING NETMASTER ON WINDOWS

STEP 1: Download the NetMaster installation file to your computer (<https://www.womaster.eu/download.php>). Extract the file and to run the setup program by double clicking the NetMaster-vX.X.exe icon.

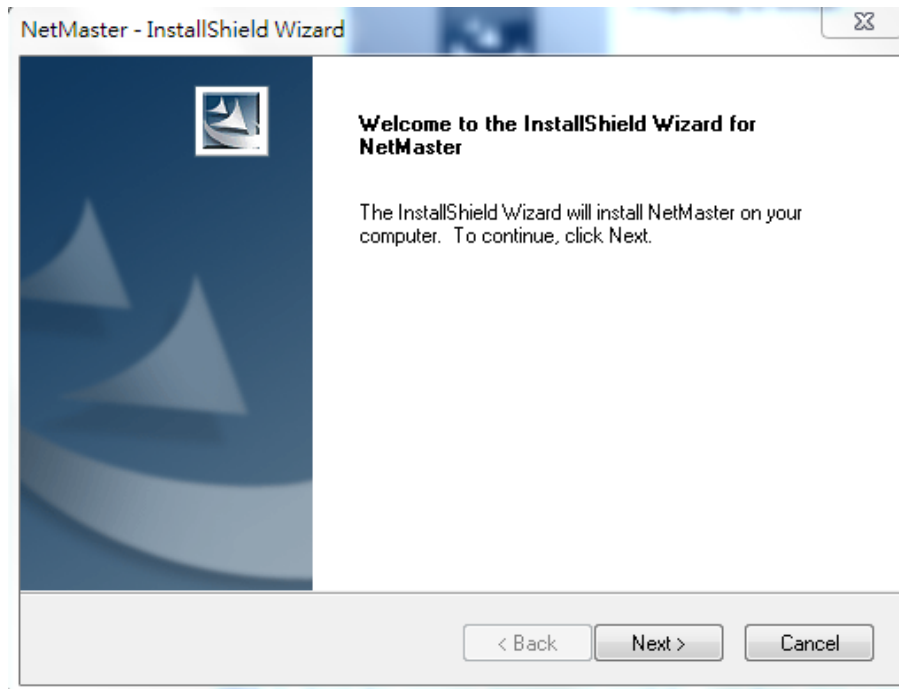
STEP 2: Click the installer file, and a warning message from Windows about User Account Control will appear then click **Yes**.



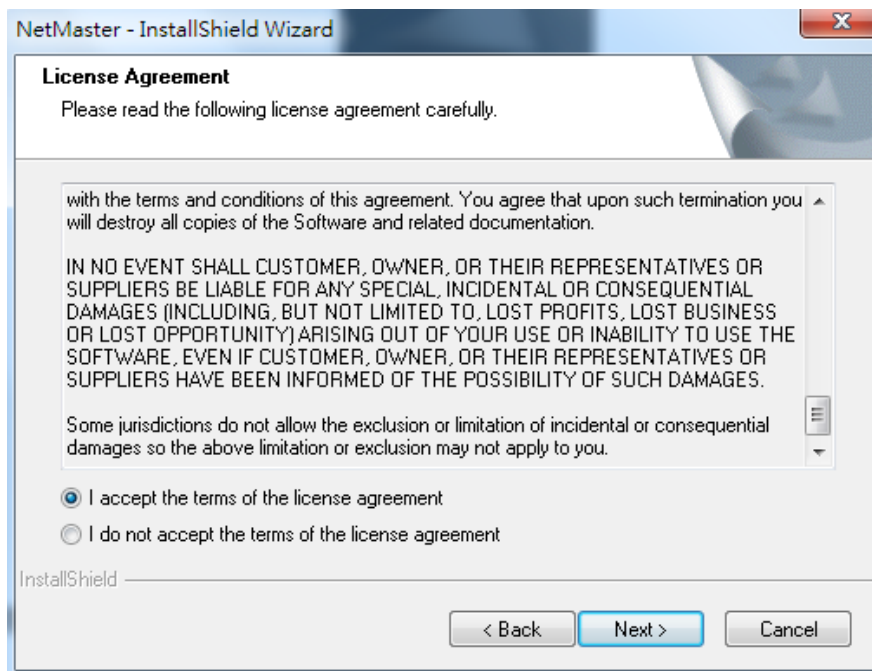
STEP 3: A preparing to install form will appear and wait till extracting the NetMaster.msi file is complete



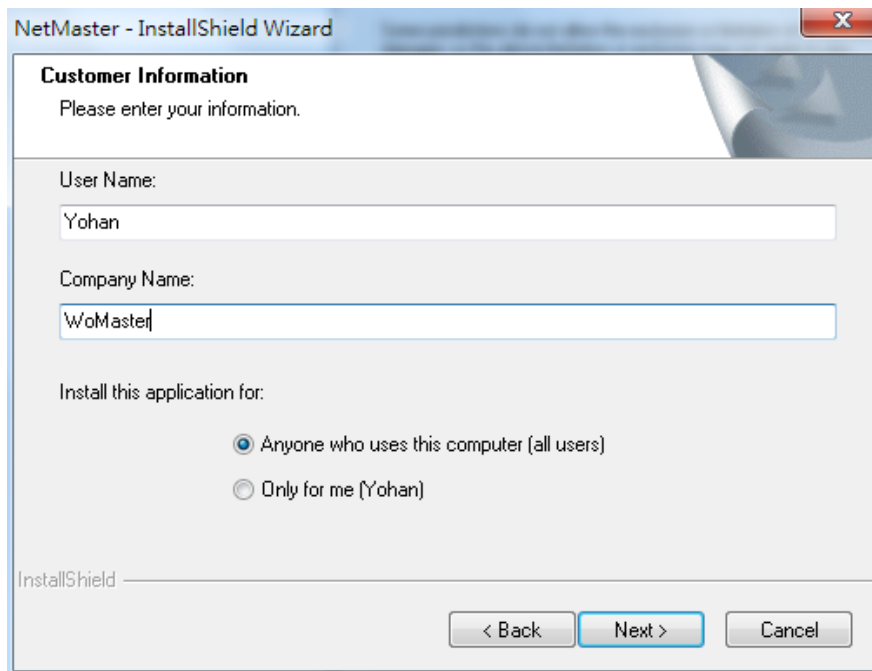
STEP 4: Click **Next** to install NetMaster installer.



STEP 5: Read the License Agreement carefully, and then click I accept the terms of the license agreement. Click Next to continue.

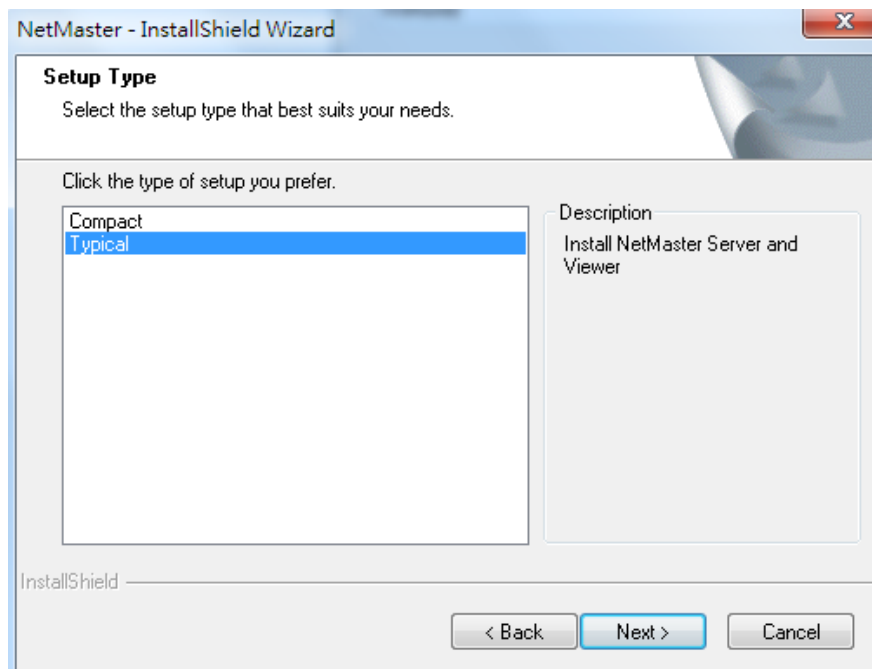


STEP 6: Fill the Customer Information form User Name and Company Name, and also choose for who user install the application for. After that click Next to continue.



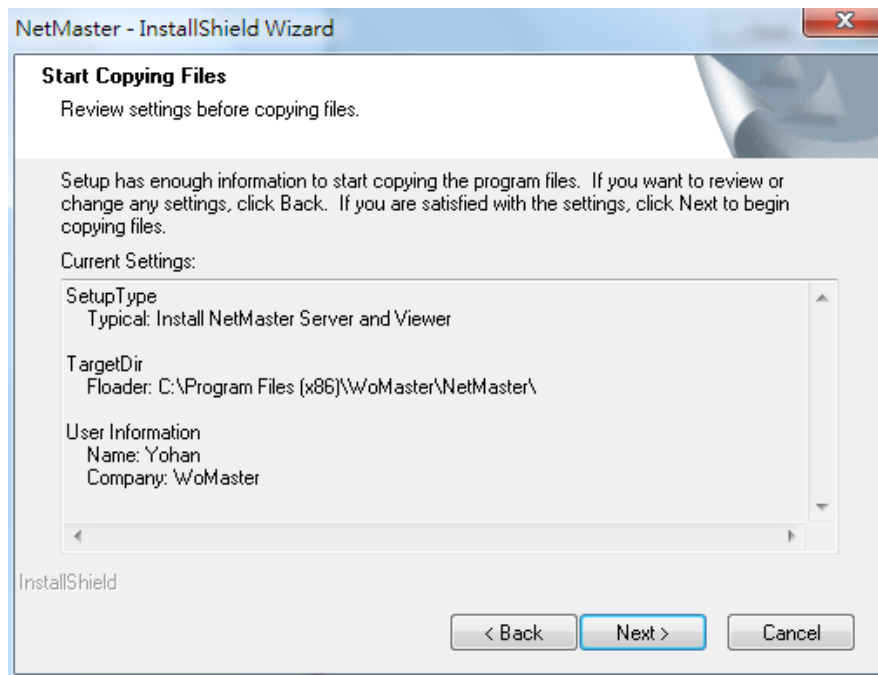
The screenshot shows the 'Customer Information' dialog box of the NetMaster - InstallShield Wizard. The title bar reads 'NetMaster - InstallShield Wizard'. The main heading is 'Customer Information' with the instruction 'Please enter your information.' Below this, there are three input fields: 'User Name' containing 'Yohan', 'Company Name' containing 'WoMaster', and 'Install this application for:' with two radio button options: 'Anyone who uses this computer (all users)' (selected) and 'Only for me (Yohan)'. At the bottom, there are three buttons: '< Back', 'Next >', and 'Cancel'. The 'InstallShield' logo is visible in the bottom left corner.

STEP 7: Select the type of setup, **Compact** for installing the NetMaster Viewer only as a client or **Typical** for installing both NetMaster Server and Viewer, then click Next to continue.

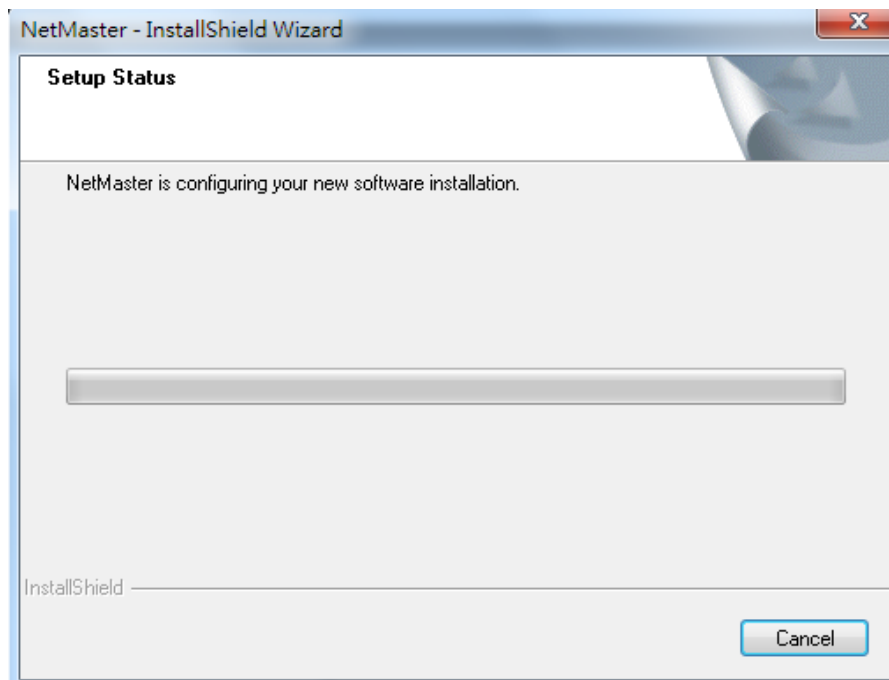


The screenshot shows the 'Setup Type' dialog box of the NetMaster - InstallShield Wizard. The title bar reads 'NetMaster - InstallShield Wizard'. The main heading is 'Setup Type' with the instruction 'Select the setup type that best suits your needs.' Below this, there is a list box with the instruction 'Click the type of setup you prefer.' containing two options: 'Compact' and 'Typical'. To the right of the list box is a 'Description' field containing the text 'Install NetMaster Server and Viewer'. At the bottom, there are three buttons: '< Back', 'Next >', and 'Cancel'. The 'InstallShield' logo is visible in the bottom left corner.

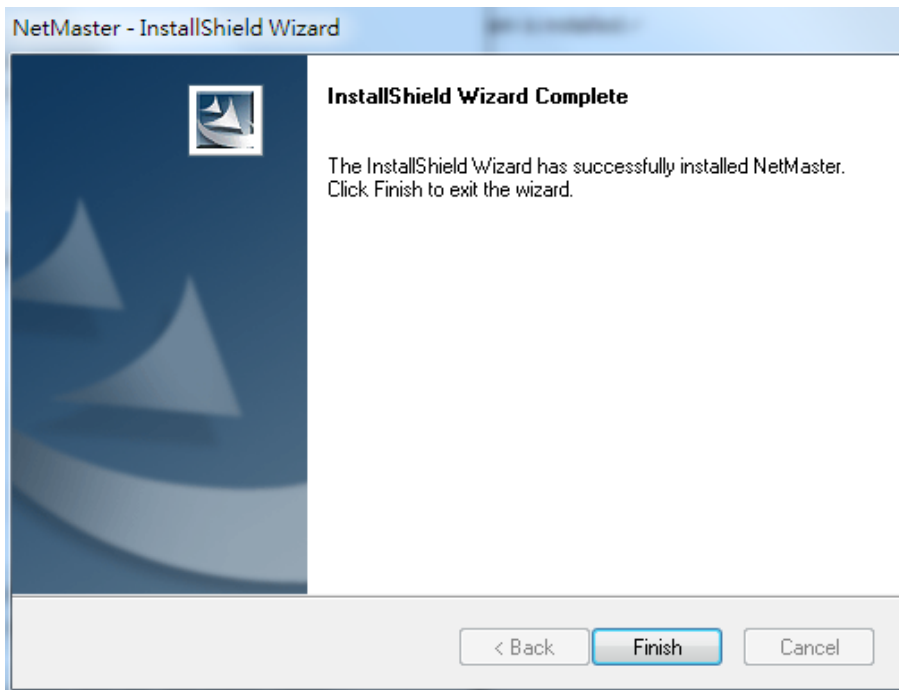
STEP 8: Verify that all of the information are correct, and then click Next to continue.



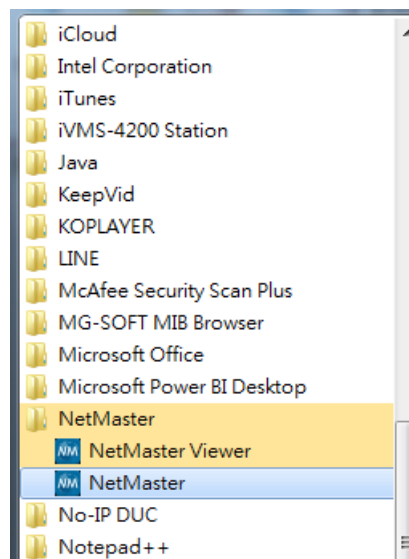
STEP 9: Wait while the program is installed.



STEP 10: Click **Finish** to complete the installation.



STEP 11: To open the user interface of the NetMaster, click Start > Programs > NetMaster



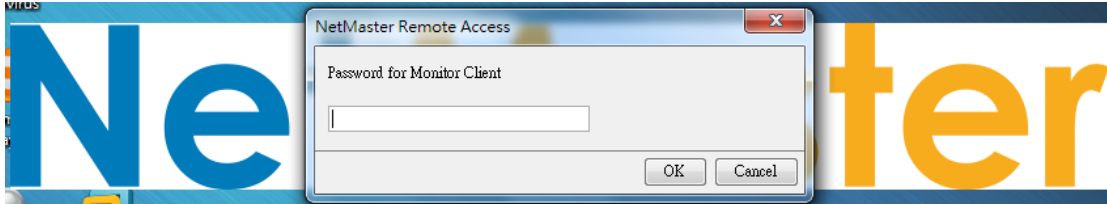
After that the NetMaster interface will appear. When the software is ready, user may click the Edit Mode and enter the default password "admin" then the list will show up some devices that detected by the interface.

NETMASTER SERVER & CLIENT

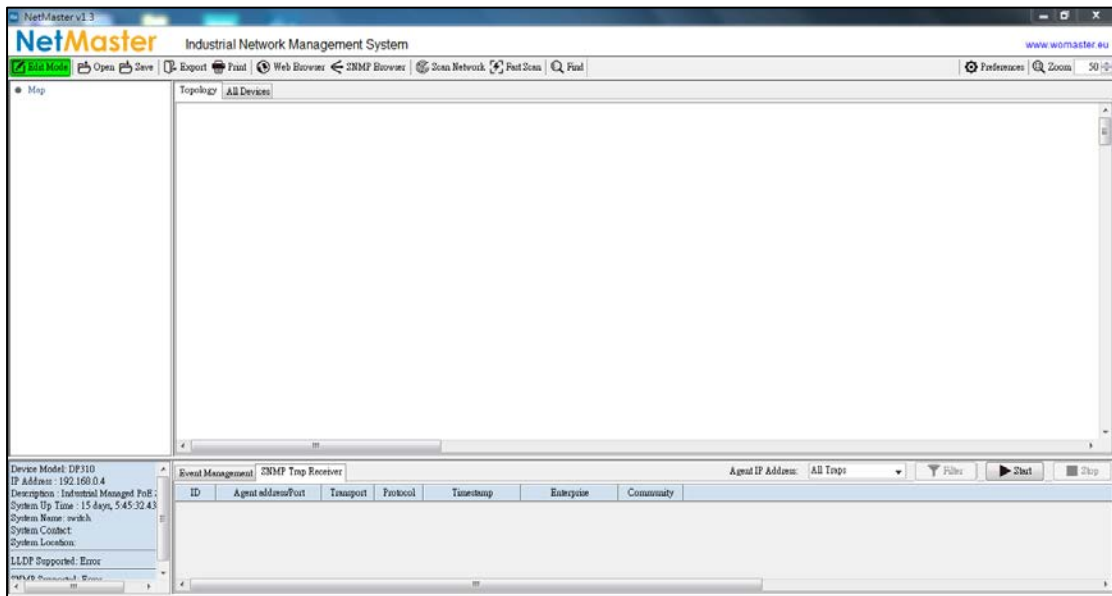
NetMaster Server



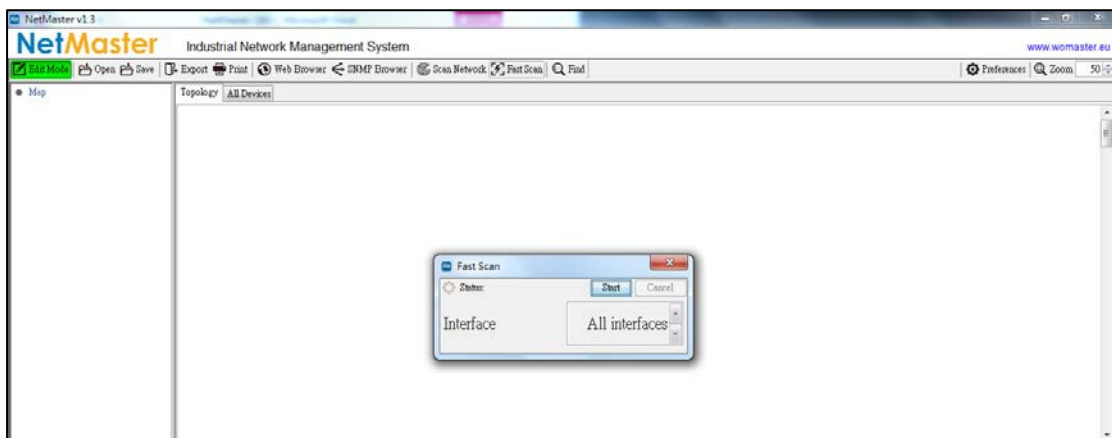
The NetMaster Server is limited for 5 clients only. When user clicks the icon, it will ask user to enter the password for monitor client. (Default password: admin). And a white blank screen will appear.



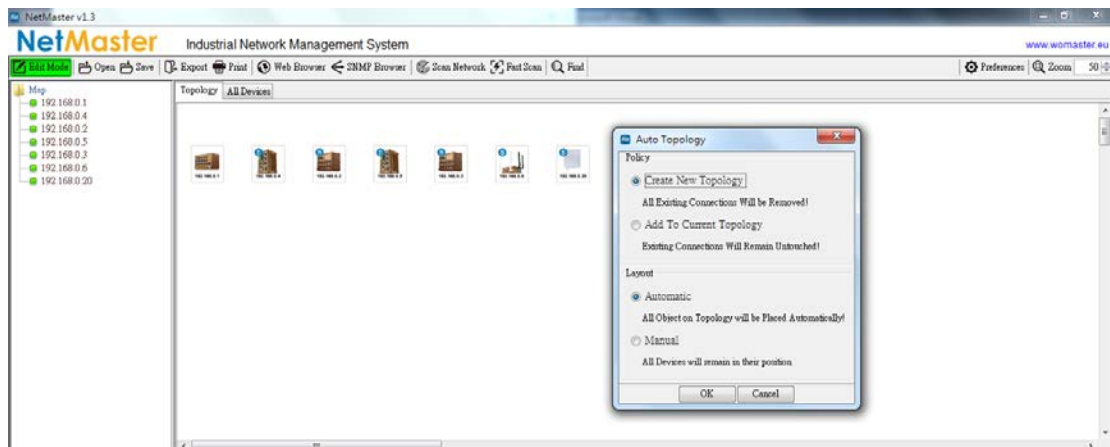
Click the Edit mode and once again enter the password, so user can enter the edit mode.



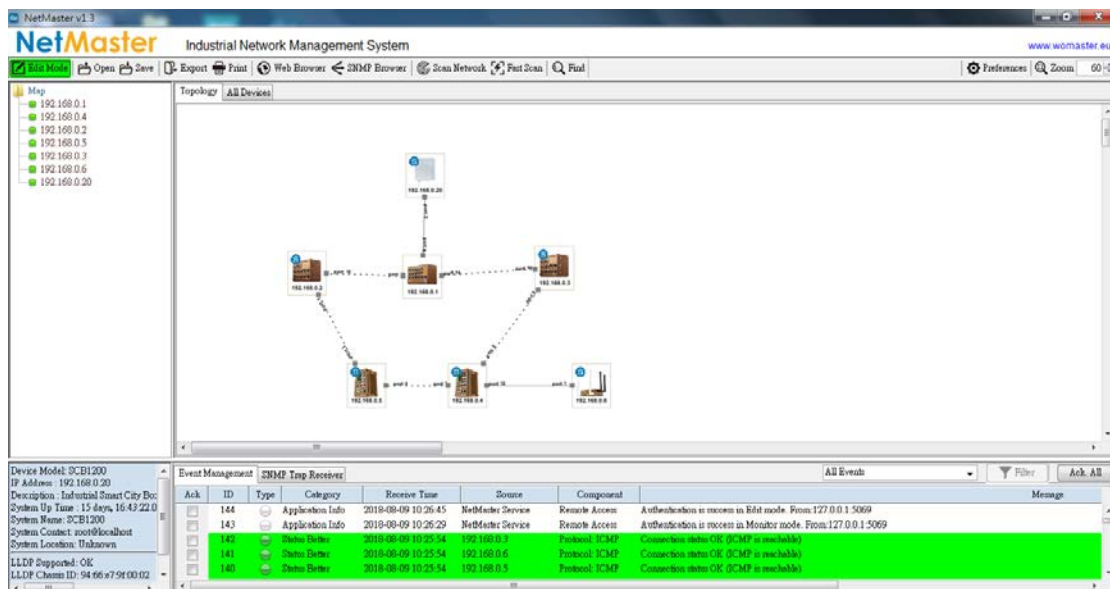
Click Fast Scan, to discover the device through the interface. User may choose the interface.



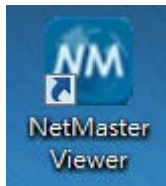
After all of the devices are discovered (wireless and switch devices), they will appear on the dashboard. Then user needs to create the topology by do the right click on the dashboard, and choose **Auto Topology**. And another menu will appear then click **OK** and click **Start** to let the NMS draw the topology.



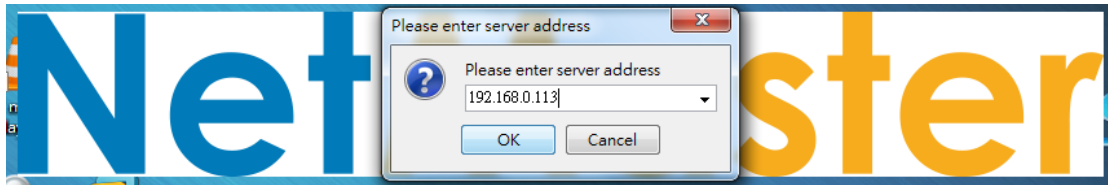
After the NMS get the topology, the port line will be established based on the real topology that has been discovered. And user just needs to arrange the position of the device.



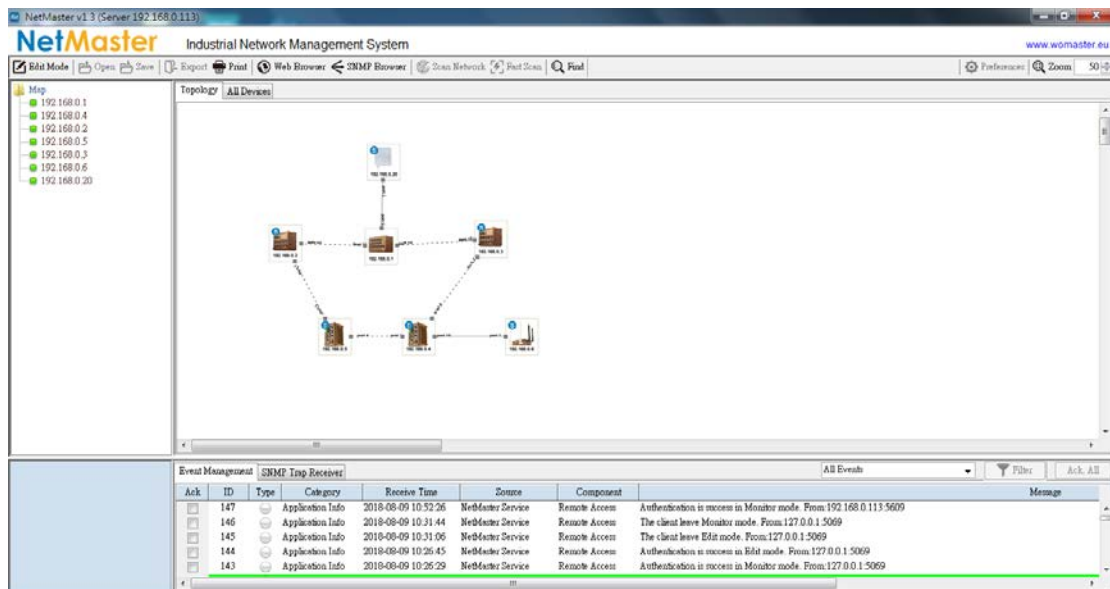
NetMaster Viewer (Client)



The NetMaster Viewer is the client mode, this software need to access the NetMaster server to get the current topology. When user clicks the icon, it will ask user to enter the server IP Address. And enter the password (Default password: admin).



The similar interface as the NetMaster server will appear.



For Edit Mode section, both server and client cannot be on the same mode or it is not for multiple users. If one user is in the Edit mode, the other user need to wait till the first user leave the Edit Mode section then he can enter the Edit Mode. For more information about the features, please refer to the User Manual.