

Software Version : EasyBuilder Pro V6.10.01.422

New Supported Models

MT8106iP (V2), cMT3218XP

Resolved Issues

1. Added support for safely removing USB flash drives on all cMT X models.
2. Software may crash when using OPC UA server in Information Modeling mode.
3. Object dimensions may be miscalculated when using the Find/Replace label or label tag library feature.
4. Objects in lower layers cannot be modified when multiple overlapping objects are selected.
5. Media Player may fail to play content occasionally.
6. When switching from one popup window to another using the same underlay window, the underlay window may not be displayed.
7. Event Logs cannot be displayed in EasyWeb 2.0.
8. Table alignment functions incorrectly.

Communication and Drivers

1. **[CAN Bus CANopen Slave]**
Fix inability to reconnect after a disconnection.
2. **[OPC UA Client]**
Fix communication failures under specific conditions.
3. **[Siemens S7-1200/S7-1500 (Absolute Addressing) (Ethernet)]**
Fix software crash when searching tags using objects.
4. **[Siemens S7-1200/S7-1500 (S7CommPlus, Symbolic Addressing) (Ethernet)]**
Added support for importing tag files and communication with TIA Portal V20.

Software Version : EasyBuilder Pro V6.10.01.359

New Supported Models

cMT-SVR-100 (V2), cMT-SVR-200 (V2), cMT-G01X, cMT-G02X

Resolved Issues

1. The setting for using the popup keypad on the object is missing.
2. The hold control for Data Sampling is incorrectly set after using the import function.
3. The Trend Display object still updates with the latest data even when a historical file is selected.
4. Using JSON (Advanced) for MQTT topic subscriptions may crash the software when using the Preview function in the Address tab.
5. Using the subcategory sorting function on the Event Log settings page may crash the software.

Communication and Drivers

1. **[Rockwell Micro850 - Free Tag Names]**
Fixed communication issues.
2. **[KEYENCE KV-8000 (Symbolic) (Ethernet)]**
Added support for KV-X Series PLC.

Software Version : EasyBuilder Pro V6.10.01.323

New Supported Models

cMT2078X (V2), cMT3072X2 (V2), cMT3072XH2 (V2), cMT3072XHT (V2), cMT3072XP (V2)

Resolved Issues

1. Fixed software crashes that occur when opening the System Parameter Settings window.
2. Fixed an issue where the window animation effect may not display correctly during window switching in pop-up mode with Indirect Windows.
3. Text positions may be displaced when copying objects linked to the Label Tag Library between project files.

Communication and Drivers

1. ***[Barcode/RFID Reader]***
Increased the maximum read length to 512 words.
2. ***[Beckhoff TwinCAT 3 ADS/AMS (Ethernet)]***
Fixed an issue where the disconnection of one device in a multi-connection setup may result in the remaining devices also becoming disconnected.
3. ***[Fuji SPH2000/3000 IEC Mode (Ethernet)]***
Fixed communication issues with IW/QW/IX/QX.
4. ***[Inovance Easy Tag (Ethernet)]***
Added this driver.
5. ***[KOYO Do-more (Ethernet)]***
Fixed an issue where the disconnection of one device in a multi-connection setup may result in the remaining devices also becoming disconnected.
6. ***[OPC UA Client]***
Fixed an issue where active reading causes updates to stop and the device server to go offline.
7. ***[Rockwell EtherNet/IP (CompactLogix) - Free Tag Names]***
[Rockwell EtherNet/IP (ControlLogix) - Free Tag Names]
[Rockwell ControlLogix - Free Tag Names]
Fixed data access issues with multi-dimensional array tags and index registers.

8. [Siemens TI505 (Ethernet)]

Fixed an issue where addresses beyond V2048 cannot be read or written properly.

9. [Siemens S7-1200/S7-1500 (Absolute Addressing) (Ethernet)]

Added support for DBn_WString and DBx_WString data types.

10. [YASKAWA DX100/DX200/FS100/YRC1000 Robot Controller (Ethernet)]

Fixed an issue where specific commands do not function

Software Version : EasyBuilder Pro V6.10.01.259

Resolved Issues

1. Fixed an issue where using multiple sections in the data sampling source may lead to an abnormal increase in HMI memory load, resulting in system crashes.

Software Version : EasyBuilder Pro V6.10.01.252

Resolved Issues

1. Fixed EasyBuilder Pro crash due to having fewer than 4 channels in a Pie Chart.

Communication and Drivers

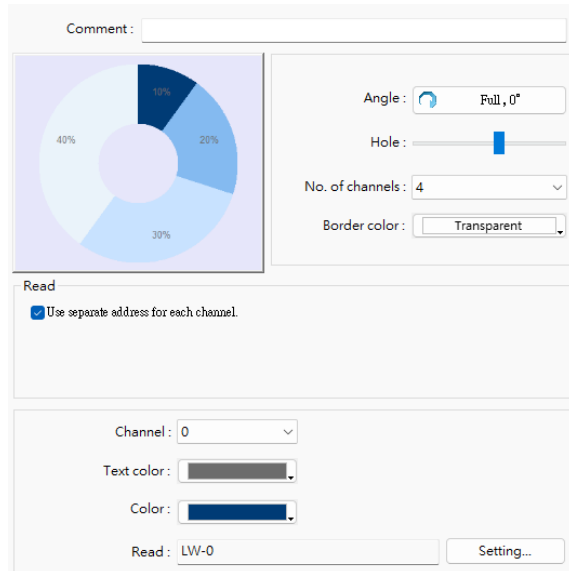
1. Fixed an issue where tag-based PLCs cannot correctly read bit tags.

Software Version : EasyBuilder Pro V6.10.01.243

New Features

2. [Pie Chart]

Added an option to use separate addresses for each channel.



Resolved Issues

1. Bit Lamp not blinking as configured.
2. Numeric object with leading zero text alignment incorrectly changed to center alignment under certain operations.
3. Using certain input methods may cause ASCII objects using Unicode to read incorrect memory and result in crashes.

Communication and Drivers

1. [Beckhoff TwinCAT PLC - Free Tag Names (Ethernet)]

Fixed an issue where address offsets occurred after the decompilation of files that contain bit arrays not starting from zero.

2. [IEC 60870-5-104 IEC 104 Server]

[MODBUS Server]

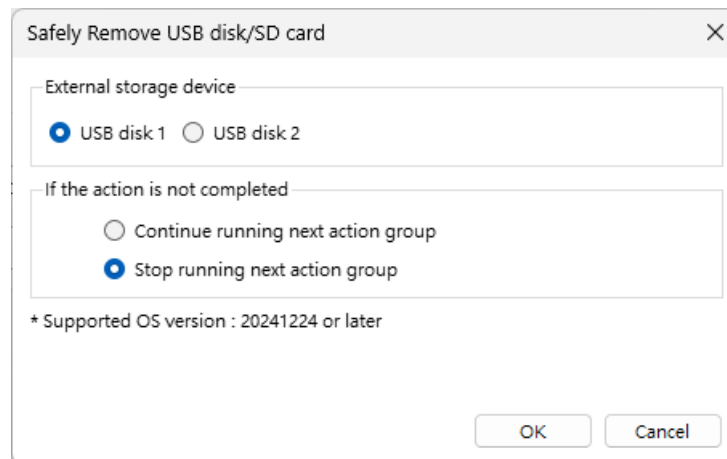
Fixed the issue causing EasyBuilder Pro to crash during address mapping configuration in the gateway.

Software Version : EasyBuilder Pro V6.10.01.217

New Features

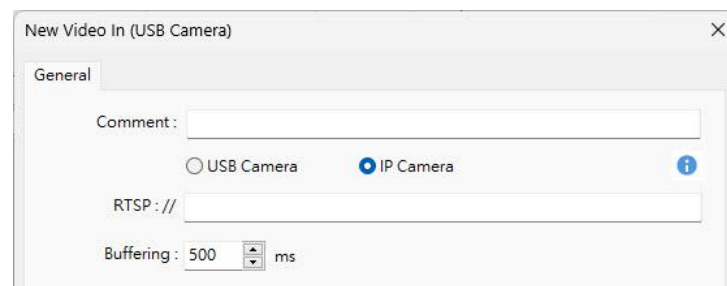
1. [Combo Button] [Action Trigger] [Touch Gesture]

Added the [Safely Remove USB disk/SD card] action to action group configurations to prevent potential file corruption caused by the connection/disconnection of external storage devices.



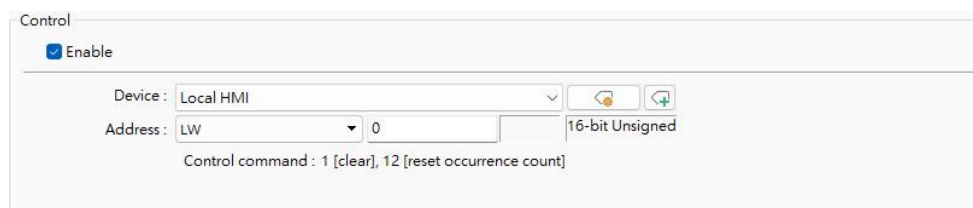
2. [Video In]

Added a buffering time setting to ensure smoother video playback with a slight delay in unstable network conditions.



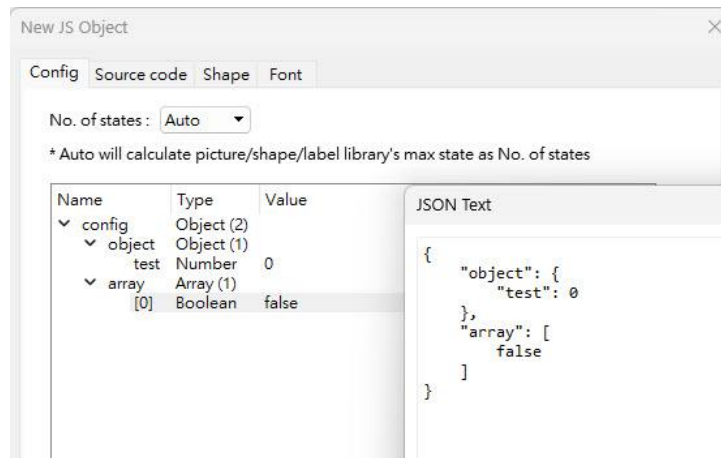
3. [Event Log]

Added support for control command to reset the occurrence count, allowing events without configured statistical functions to be reset in a single action.



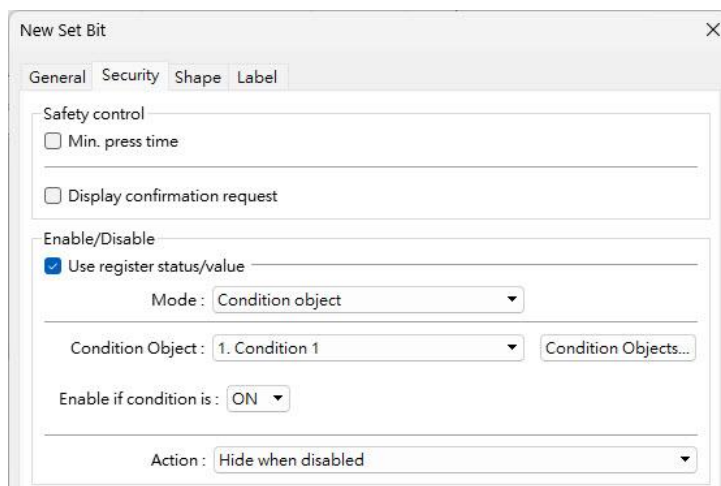
4. [JS Object]

Added the ability for JSON text used in configuration templates to be sorted according to the order in which they are written.



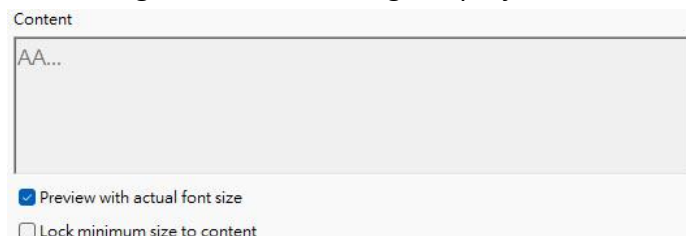
5. [Bit Lamp] [Toggle Switch] [Set Bit] [Word Lamp] [Multi-State Switch] [Set Word]

Added support for the use of [Condition Object] as a trigger mode for security functions.



6. [ASCII]

Added an option in the Font tab that allows users to adjust the size of objects without locking the minimum size, facilitating more flexible design of project files.



7. [Bar Graph] [Meter Display]

Added support for retrieving upper and lower limit ranges from different registers.

Dynamic target/alarm/min(max)

☒ Enable ☒ Dynamic min/max

☒ Use different address for ranges

Min/Max address...

Target address... Alarm address...

8. [Direct Window] [Indirect Window]

Added the ability to input negative coordinates through user-defined tags when using dynamic position.

New Direct Window

General Position Security

☐ Auto. adjust window size

☒ Dynamic position

Device: Local HMI

Address: X

X Address: X: LW-0

Y Address: LW-1

9. [MQTT]

Added support for event log sending mode when a topic uses dynamic strings.

New MQTT Topic Publisher

General Security

Nickname: topic 1

Topic: %(DYNAMIC) Generate

%0 : HMI name
%1 : Client ID for server
%(DYNAMIC) : Dynamic string
%% : Character "%"

Dynamic string

Device: Local HMI

Address: LW 0 20 word(s)

Sending mode: Event (Alarm) Log

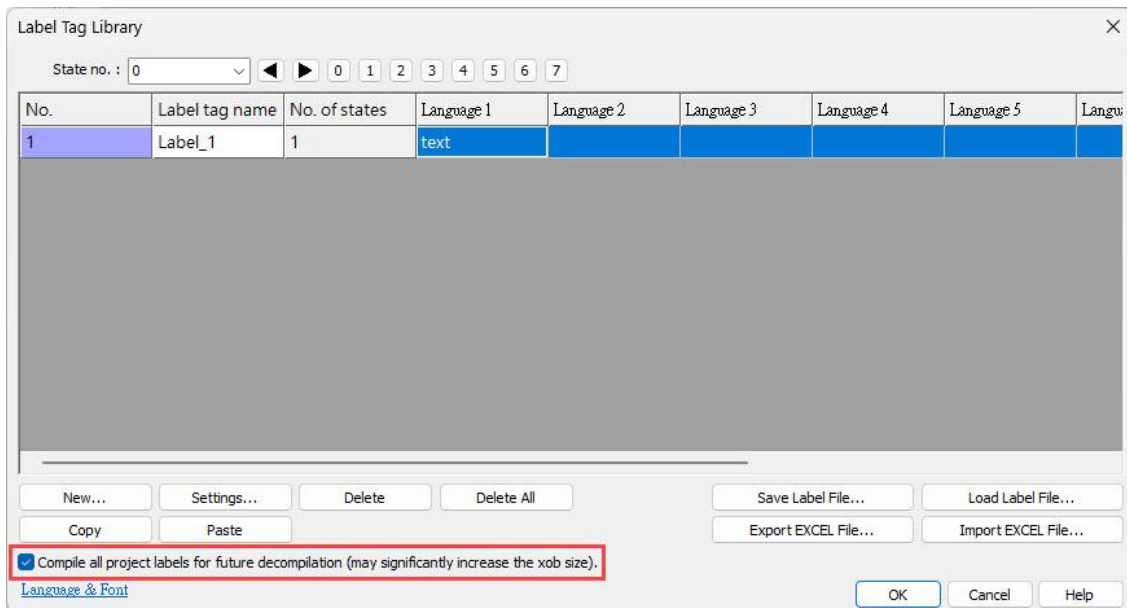
☒ Include recover event

☒ From index No. 1 [Event 0]

☐ From category

10. [Label Tag Library]

Added the ability for unused text labels to be fully compiled, ensuring they are preserved in subsequent decompilation processes.



Communication and Drivers

1. [DELTA Ethernet/IP (AS Series)]

Added support for tag file import.

2. [KEYENCE KV-8000 (Symbolic) (Ethernet)]

Added support for using index registers in multi-dimensional arrays.

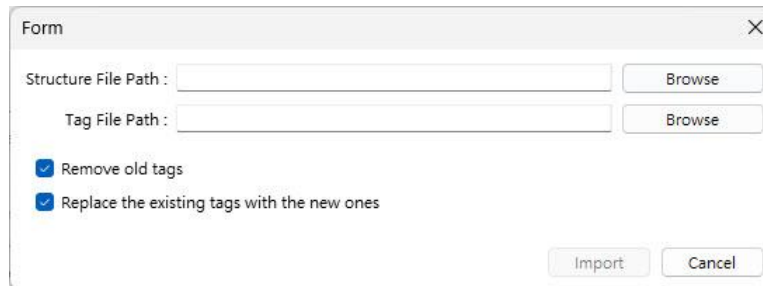
3. [Mitsubishi FX5U]

[Mitsubishi FX5U - ASCII Mode (Ethernet)]

[Mitsubishi FX5U - Binary Mode (Ethernet)]

[Mitsubishi iQ-R Series (Ethernet)]

Added support for custom structure file import.



The screenshot shows a dialog box titled "Form" with a close button (X) in the top right corner. It contains two text input fields: "Structure File Path :" and "Tag File Path :". Each field has a "Browse" button to its right. Below these fields are two checked checkboxes: "Remove old tags" and "Replace the existing tags with the new ones". At the bottom right of the dialog are two buttons: "Import" and "Cancel".

4. [Schneider SoMachine M Series (Ethernet)]

Added support for a new communication protocol, IP address (Fast TCP).

5. [Siemens S7-1200/S7-1500 (S7CommPlus, Symbolic Addressing) (Ethernet)]

Added support for the WSTRING data type.